



SPLASH*Forward*

Water for All | Water for Life

Partnering with our Community
to Bring State-of-the-Art Public Aquatics Facilities
to our Region

Community Meeting

August 2, 2022

Agenda

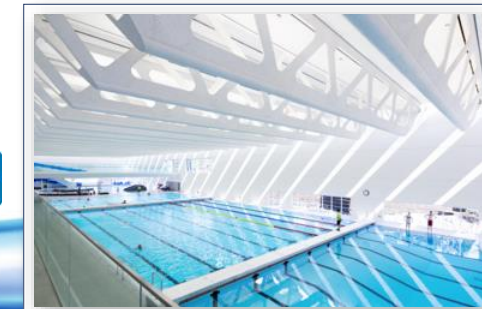
- Welcome – Polls
- Introductions & Framing
 - Brief *SPLASHForward* Intro
 - *SPLASHForward* Update
- Bellevue Airfield Park Recap
 - How does the Master Plan fit into the big picture?
 - Why updating the Master Plan (2012 background)
 - Purpose of 1st Community Meeting
 - What was heard – key themes & questions
- Q&A + Polls
- What's Next
- Call to Action



SPLASHForward

Water for All | Water for Life

We believe communities are healthier and stronger with safe inclusive places to be active and social together



- First new public aquatic facility in Bellevue in over 50 years
- Partnerships with City of Bellevue, BSD, King County, Community
- Private Fundraising Partner
- Representing community needs, Equitable Access
- Master Plan Update for Bellevue Airfield Park Has Begun

SPLASHForward.org



SPLASHForward
Water for All | Water for Life

SPLASHForward Vision

Learn To Swim / Water Safety



Family Time



Competition— 50m (2 x 25m) + Deep Water Pool



Family Fun, Leisure Park



Water Therapy



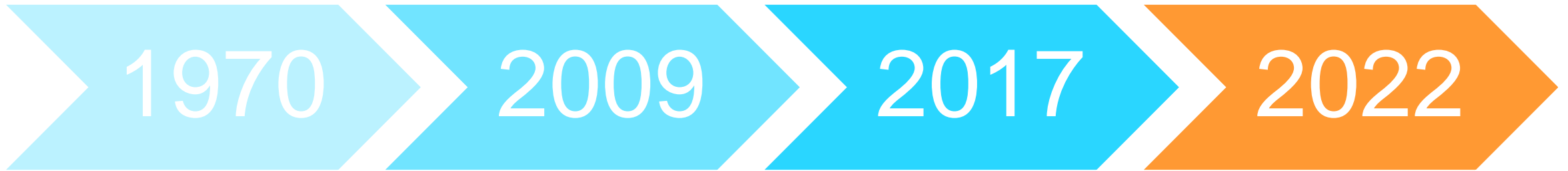
Lap Swim, Masters Swim, Triathlon Training



Programming for All Ages & Abilities



How Far We've Come



1970 – 1968 Forward Thrust Bonds built 16 pools in King County over 4yrs, 1970 Bellevue Aquatic Center (BAC)

1992 – City of Bellevue takes ownership of BAC and adds Warm Springs Pool

2009 – Bellevue Aquatic Center Feasibility Study completed – 5 options, Economy tanked

2017 – *SPLASHForward* gets its start after original SPLASH (2006-9)

2020 – *SPLASHForward* delivers analysis and feasibility report – Preferred and Alternate options

City of Bellevue updates Aquatic Center feasibility study – 3 options, 4 sites

2021 – City Council supports *SPLASHForward* & Bellevue Parks **Unified Concept Plan** for facility, update **Bellevue Airfield Park** master plan, and formalize **MOU with *SPLASHForward***

 **2022** – **Master Plan Update Commences** for Bellevue Airfield Park, City Council **authorizes** MOU with *SPLASHForward*

SPLASHForward Update



- Board and organizational growth
 - Hired consultants
 - Board Assessment, Org Planning, Fundraising
- Seed Funding
 - Raised \$364,601 – 72.9% of goal (\$500K)
 - Amazon \$40,000 donation - June
- HS Lifeguard Training Program
 - 66 student lifeguards trained to date!
 - More each month
- Aquatics Pathways
 - Intro to Aquatics & Water Safety
- Community & Partner Outreach



 SPLASHForward.org



SPLASHForward Consultants



Sara Morris

- Strategic planning & organizational consultants
- Fundraising preparedness planning
- Former Executive Directors
- State, City, School District sector experience



Chris Korsmo



ECKERHAUS CONSULTING
Experienced Nonprofit Solutions



Cole Eckerman

- Strategic planning & fundraising development consultant
- 20 yrs nonprofit fundraising development
- Former Development and Government Relations Director for Bellevue Arts Museum



BRITTANY KIRK
nonprofit consulting



Brittany Kirk

- Grant writing, prospecting, and research expert for nonprofits
- Familiar with local, state, and federal grants and foundations
- Fundraising evaluation consulting



SPLASHForward
Water for All | Water for Life

SPLASH*Forward* and City Partnership



Susan Pappalardo
SPLASH*Forward*

- SPLASH*Forward* Co-Founder, Board President
- 15yrs Program Management Leadership in Computer Graphics and Mobile Software, (11yrs @ Microsoft)



Stu Isaac
Isaac Sports Group



- Independent National Aquatics Consultant
- Former Senior VP of Team Sales & Marketing, Speedo
- ISG has 30+ yrs Facility Operating
- Deep Experience w/ Public/Private Partnerships
- Nationally Recognized Leader & Relationships w/ Sports Governing Bodies & Aquatics Industry



Michael Shiosaki
City of Bellevue
Director of Parks & Community Services



Pam Fehrman
Planning and Development Manager,
City of Bellevue

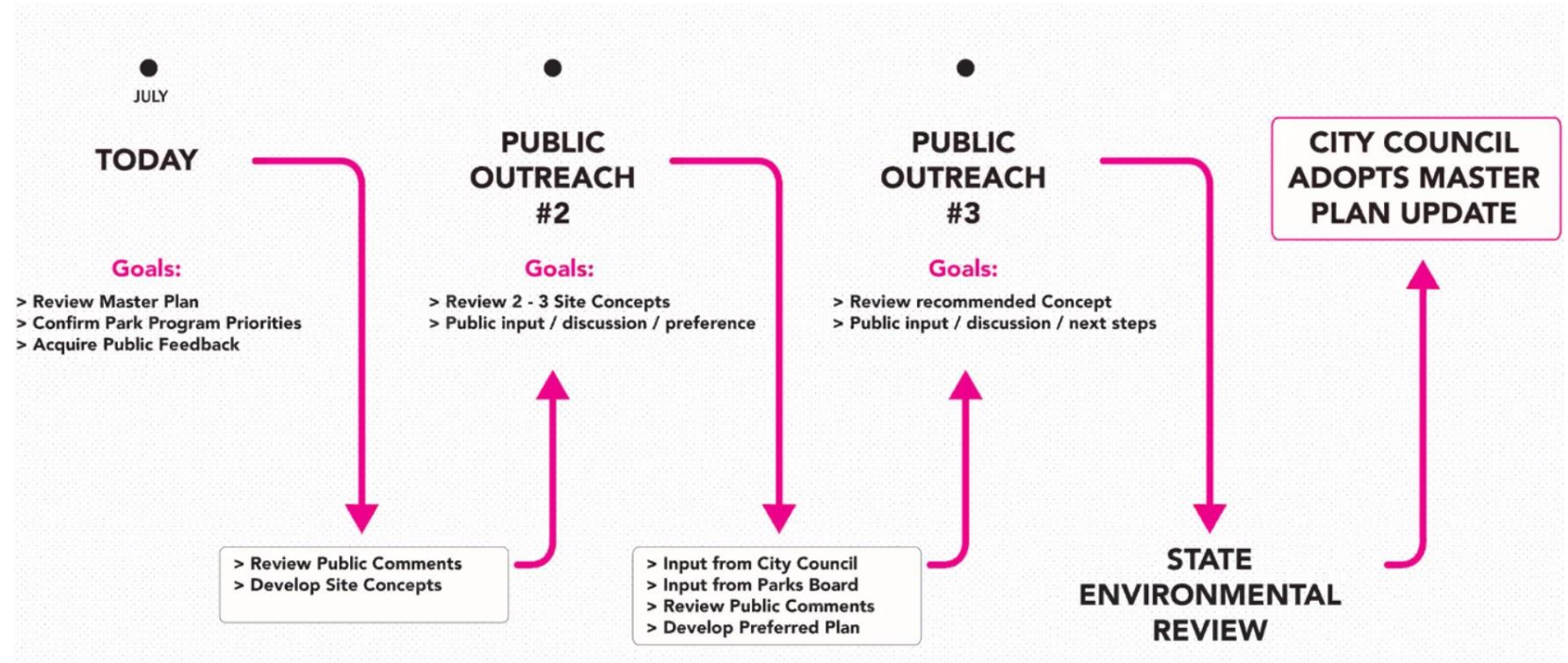
Ken Kroeger
Project Manager, City of Bellevue

Airfield Park Master Plan Update Process

Big Picture Timeline

- 2020
 - Aquatic Center Feasibility Study (City and SF)
- 2021
 - Council directs update to Master Plan to explore aquatic center
- 2022
 - Master Plan Update - Community Input & Plan Refinement
 - Parks Board & City Council - input & Review
- 2023
 - State Environmental Protection Act Study
 - SF Fundraising Feasibility Study
 - Master Plan Adoption
- 2024 – 26
 - If Plan includes Aquatic Center - Design Phase

City of Bellevue Process



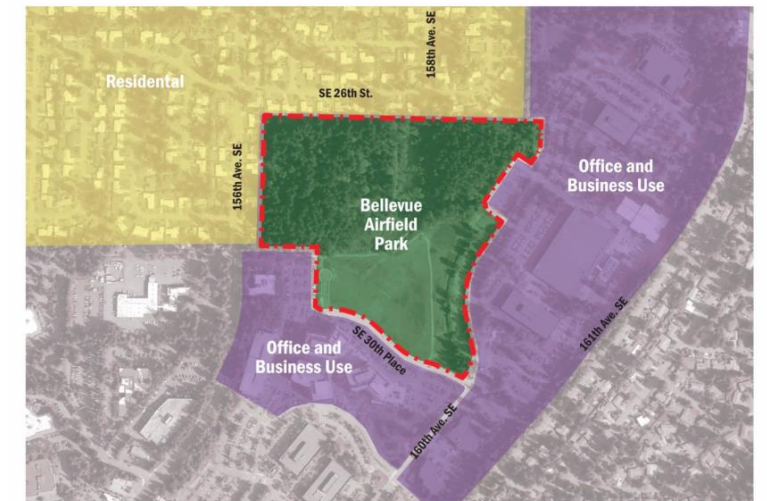
Community Meeting #1 Goals

- Last Oct, City Council directed Parks to assess Bellevue Airfield Park as the possible site for the new public aquatic center concept plan
- Provide a history of the 2012 Master Plan Update for Bellevue Airfield Park
 - 10 yrs ago, priorities updated
- Input from park users and neighbors on priorities and preferences for what they want to see at the park
- Feedback on the Meeting (targeted SF Poll)
 - Unclear goal
 - Clunky, could be run more efficiently. Polling was not easily accessible to all
 - Some voices dominated in break out rooms
 - Breakout sessions allowed people to speak and were respectful

~78 attendees

Overall Themes of Meeting

- Desire to have a balance between active and passive uses at the park
- Support for an aquatic center, pickle ball, dog park, natural areas
- Sports playing fields not high priority compared to 2012 master plan community input
- Neighborhood concerns (noise, light, traffic, environmental impact)
- Unclear sense for scope of aquatic center city is considering
- Organized voices – pickle ball
- Similar top preferences to 2012
 - Active Recreation
 - Preserve Open Meadow
 - Off leash Dog Area
 - Aquatic Center



Existing Land Use



2012 Master Plan Organization

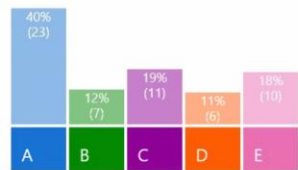
Top Questions Heard

- What happened to the 2012 Master Plan and why didn't it get executed?
- How did we get to where we are now with evaluating an aquatic center on the site?
 - What happens to the current Bellevue Aquatic Center and impact on community pools (Phantom Lake, Samena)?
- How do I access the online poll?
- What does the City see as the funding mechanisms and partnerships for an aquatic center?

What was heard?

How do you use Bellevue Airfield Park?
(select all that apply)

- Walking ■ A
- Biking ■ B
- Dog Walking ■ C
- Leisure ■ D
- Other ■ E



57

Poll Question #3

Where else do you currently
recreate in the neighborhood?
(select all that apply)

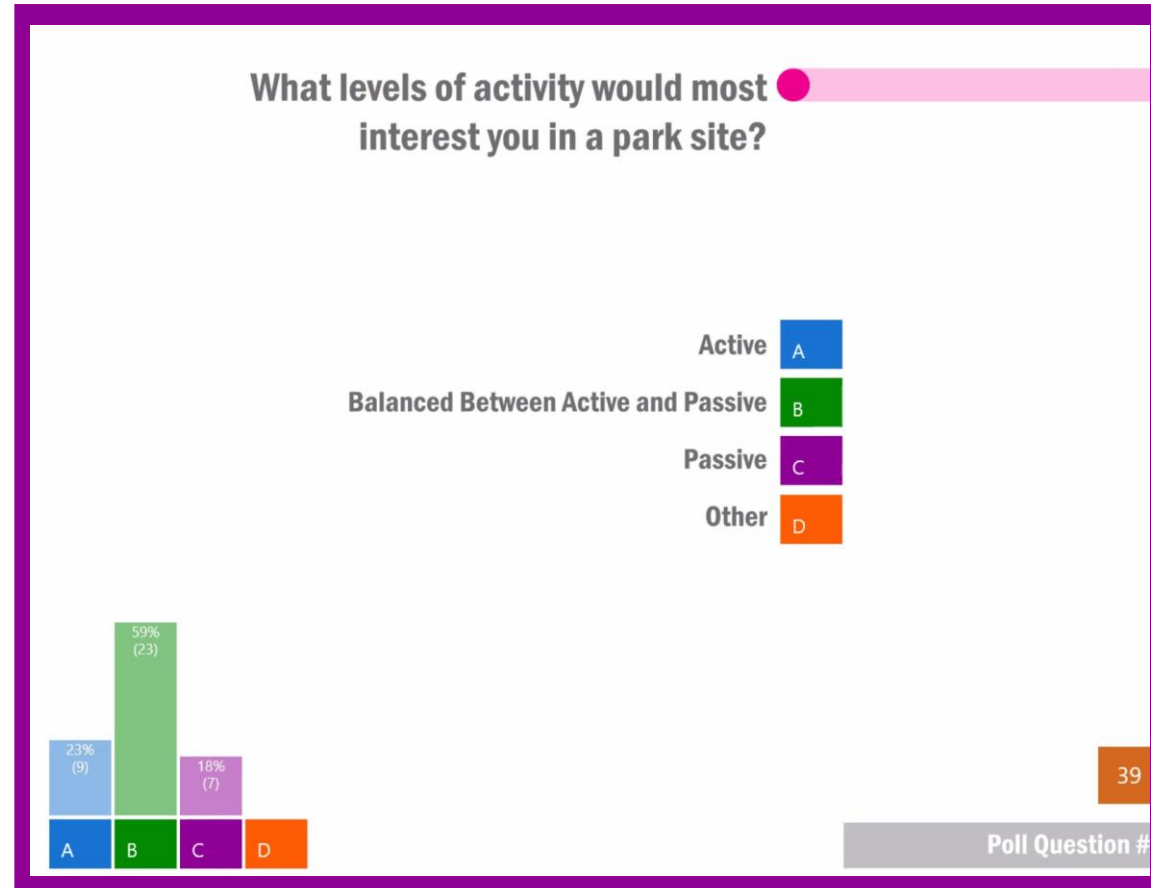
- Weowna Park ■ A
- Phantom Lake ■ B
- Robinswood Park ■ C
- Sprintridge Park ■ D
- Other ■ E



89

Poll Question #4

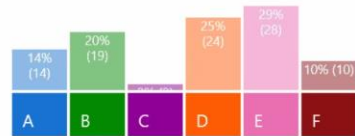
What was heard?



What was heard?

Which active programs would most interest you in a park site?
(Select up to 3)

- Sports Fields ■ A
- Sports Courts ■ B
- Skate Park ■ C
- Playground/Water Play ■ D
- Aquatic Center ■ E
- Dog Park ■ F

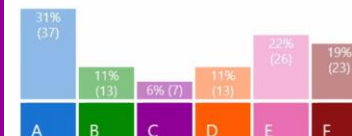


97

Poll Question #7

Which passive programs would most interest you in a park site?
(Select up to 3)

- Trails ■ A
- Community Garden ■ B
- Amphitheatre ■ C
- Meadow ■ D
- Picnic Areas ■ E
- Natural Areas ■ F



119

Poll Question #8

Programming Opportunities

Public Programming Opportunities



● Sports Fields



● Sports Courts



● Community Garden



● Skate Park



● Amphitheatre



● Dog Park



● Meadow



● Natural Areas



● Playground/Water Play



● Picnic Areas



● Aquatic Center



● Trails

Discussion



SPLASHForward
Water for All | Water for Life

Themes from Breakout Rooms

- 6 total breakout rooms facilitated by Walker Macy and Parks staff

- Preserve NW Quadrant/Buffers homes
- Desire for pickleball courts

- Keep open meadow for walking
- Dog walking builds community
- Address the homeless living in the park
- Need for an aquatic center for all of Bellevue especially our schools and their competitive needs; no where to compete

- Aquatic Center needed for community and school district
- Already have off leash dog park, ball fields and playground at Robinswood
- Keep trees and natural area
- Picnic areas
- Pickleball
- Boeing property's relationship to park?

- Preserve wildlife
- Active and passive balance
- How flexible will sports fields be?
- Skateboard park/basketball court
- Pickleball

- Offleash dog area
- Don't congest park with development
- Active and passive mix
- Pickleball complex
- More trails
- Concern on traffic coming to park
- Yes aquatic center, but here?
- Robinswood has a dog park

- Add benches and drinking fountains
- Trails, openness, undeveloped important
- Unique demand for cricket fields, all kinds of sports fields and sport courts
- Nature play in wooded areas
- Concern about storm water runoff

New Bellevue Aquatic Center

What is not known yet?

- All capital partners
 - City of Bellevue, Bellevue School District, King County, *SPLASHForward/Private*
- Refinement of concept plan to the site and capital partner needs
- Public funding mechanisms
 - Parks Measure, Grants,
- How is Airfield Park used by all city residents? How does the park grow from neighborhood usage to larger city usage?

What is known

- The need and opportunity within the City of Bellevue and region for new public aquatic center(s)
- Parks and *SPLASHForward* Concept Plan for a multi purpose Aquatic Center
- City Council's preferred site is Bellevue Airfield Park
- *SPLASHForward* is the private funding partner – signed MOU with the City '22

Bellevue Airfield Park – Potential Site

It's a Park!

Site Benefits

- Multitude of indoor and outdoor usage scenarios
- Within Bellevue's most diverse neighborhoods
- Accessible by foot, bike, bus, light rail, car

Site Facts

- 27.5 acres
- Owned by City of Bellevue
- Eastgate
- Connects to Robinswood Park
- Centrally located to schools
- Near I-90 Eastgate Park & Ride



History of Bellevue Airfield Park

- Acquired by the City in 2002
- Bellevue Airfield operated until 1983
- The site contained a landfill between 1951 - 64
- 2008 Parks Levy (\$40.5M) passed allocating \$6M to Park development
- Master Plan adopted in 2012
- Site named Airfield Park in 2012 as part of Master Plan
- Oct 2021 City Council directed staff to update Master Plan to assess siting an aquatic center at site



Existing Landfill



Bellevue Airfield Park



Existing Land Use



COB Parks Measure Update

- August 2nd (today) deadline to include on November '22 ballot
- \$85Million Parks Measure, 9yr Levy Lid Lift
 - Recreation/Community Facilities (e.g. Aquatics, Cross Cultural Center) - \$10M
- .15 cents/\$1,000 AV – Capital
- .05 cents/\$1,000 AV – M&O

2022 Approved Parks Voter Initiative Package

<i>Categories</i>	<i>Estimated Capital to be Paid fr Levy (\$M)</i>	<i>Estimated M&O (\$M/yr)</i>
Open Space, Greenways, Wildlife Corridors & Trails	\$20.0	\$0.4
Community Parks (e.g. BBG Wetland Sun Terrace Phase Development)	5.0	0.1
Neighborhood Parks (e.g. Eastgate/Factoria/Ashwood)	20.0	0.4
Recreation/Community Facilities (e.g. Aquatics, Cross Cultural Center)	10.0	0.1
Waterfront Restoration/Development (e.g. Meydenbauer Bay, Chism Beach)	10.0	0.4
BelRed/Wilburton Acquisition/Development	10.0	0.4
Emerging Sports, Off Leash Areas	10.0	0.3
Existing Facilities – Maintenance & Operations	0	2.0
TOTAL	\$85.0	\$4.0
Tax Rate per \$1,000 AV	\$0.15	\$0.05
Estimated Annual Cost Per \$1M home	\$150	\$50
Estimated Annual Revenue to the City	\$12M	\$4M

Parks & SPLASHForward Concept Plan

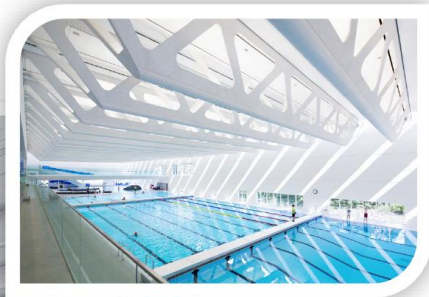
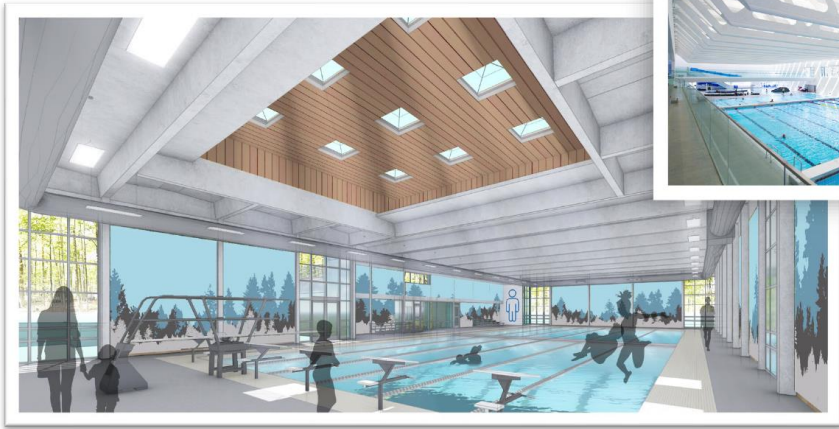
Preferred Concept Plan

Size: approx. 130,000 sf

Estimated Project Cost: \$125M (2021)

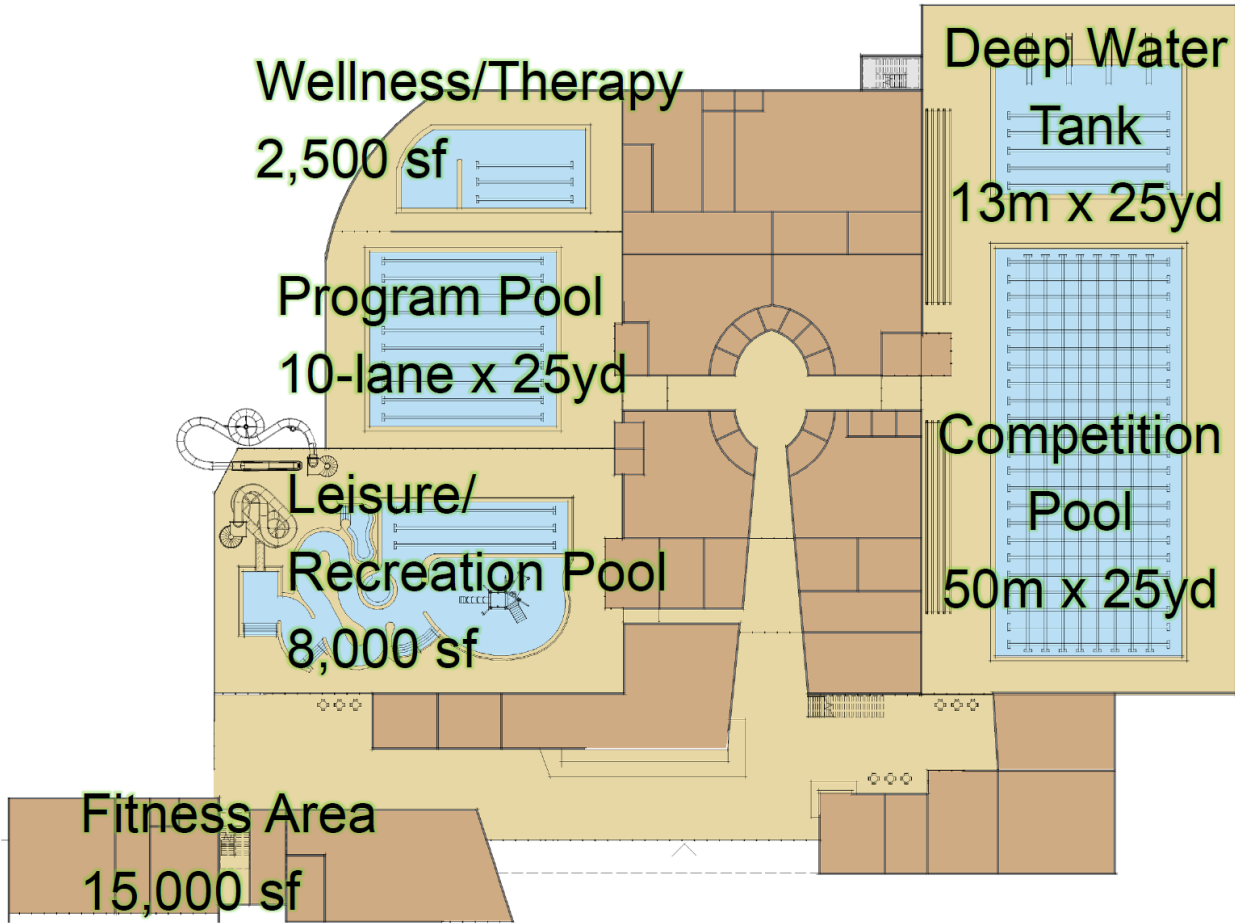
Annual Operating Subsidy: \$500K to \$1M

Cost Recovery: 82% - 91%



- 50m x 25yd competition pool
 - 900 spectators/720 competitors
- Separate Deep-Water Tank
- 25yd x 8-10 lane warm water Program and Teaching Pool
- 8,000 sf Leisure Pool
- 2,000-2,500 sf Wellness/Therapy Pool(s)
- Dry side spaces
 - Cardio/Strength/Fitness/Workout
 - Community Use Rooms
 - Lobby & Common Social Spaces
 - Other Flexible Spaces
- Local and Regional Competitions
- Parking for 500

Parks & SPLASHForward Concept Plan



- 117,425 – 132,350 sf range
- Regional scale facility
 - Primary service area Bellevue
 - Secondary, Tertiary by component and programming
- Next Steps
 - Explore partnerships and needs
 - Layout concept plan on Airfield Park site
 - Further refine sizes of all components

Conceptual layout

Funding Sources

Project Total = \$125M (2021)

Public Sources

- 60 – 65% (\$75M - \$81M)
- **General Public**
 - City of Bellevue, King County, State, Federal
 - Bellevue School District, Regional Cities
- **Public Partner**
 - **Corporate**, Health & Wellness
- *SPLASHForward* to assist developing partnerships and public grant funding

Private Sources

- 35 – 40% (\$44M - \$50M)
- **Corporate, Business, Philanthropic** (Grants, Foundations), **Individual Donors**
- *SPLASHForward* to assess private fundraising capacity via feasibility study
- Conduct Capital Campaign

Funding Sources

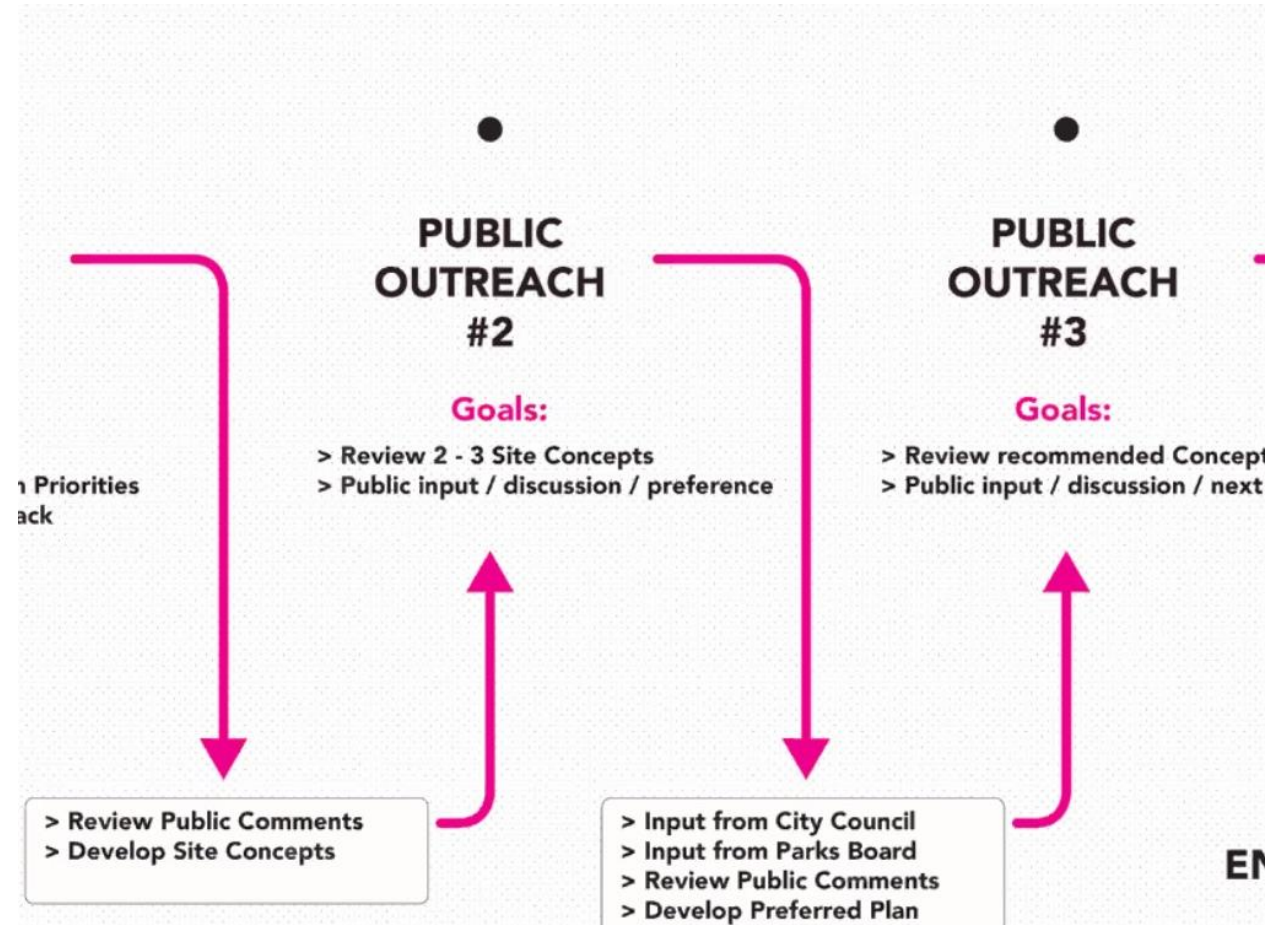
- King County - \$5M *Parks Levy Aquatic Facilities Grants Program possible max grant*
 - Regional Entities - ? **regional partnership support*
 - State (Grants) - ?
 - City of Bellevue - \$ __ M *Various Potential City Funding Sources & Funding Phases*
 - Bellevue School District - \$ __ M *allocation possible via Capital/Tech Levy*
 - Corporate Partner(s) - ?
 - Healthcare Partner - ?
 - Private - \$ __ M *~35-40% Private / 60-65% Public*
 - Foundations
 - Grants (Local & National)
 - Corporate (Local Large & Small)
 - Community Groups
 - Individuals
-
- **TOTAL Capital Cost Estimate = \$125M** **ROM City & SF Recommended Concept Plan*

SPLASH*Forward* Next Steps

- Explore indoor and outdoor recreation trends, opportunities, and synergies
- Expand community outreach and engagement
- Expand and develop SF Board and committees/working groups
- Develop plan as the private fundraising partner to the City of Bellevue
 - Continue partnership outreach
 - Identify and engage
- Recruit community members for roles in overall effort
- Support the City's update of the Bellevue Airfield Park Master Plan

Master Plan Update Next Steps

- Post slides and survey on City website
- Community Meeting #2
 - In Person meeting in September (date TBD)
 - 2 – 3 Site Concept plans developed for review by Walker Macy
 - Public input on site elements and preferences
- Report to Parks Board & City Council
- Input?
 - Anytime on City's website



Call to Action

- Help us Create Community Awareness

- Share our story – newsletter, flyers
- Invite us to community meetings
- Make introductions



- Participate in Update to Master Plan for Airfield Park

- Next community meeting – **September**

- Follow us

- Social media and newsletter



Text SPLASHFWD to
22828
to join our mailing list

We Are Stronger Together

Questions, feedback or insights to share with us?
info@splashforward.org



Text SPLASHFWD to
22828
to join our mailing list



<https://www.splashforward.org>
<https://www.facebook.com/splashfwd/>
<https://twitter.com/splashfwd>
<https://www.instagram.com/splashfwd/>

Our Supporters

Funding Supporters



Pacific Northwest Association of Masters Swimmers



BELLEVUE CLUB SWIM TEAM

HELSELL FETTERMAN



BANK OF AMERICA



Girls Swim & Dive Boosters
Boys Swim & Dive
Boys Water Polo

Tim Adkisson
Nick LeClercq
Sally and Glen Dillon
Carolyn and Dean Behse
Dale & Annadale Martin
Leslie & Randy Howard
Madeleine & Bert Valdman
Lisa Kempf
& many more on our [website](#)



Northwest Water Polo Club

Clark Nuber PS



Endorsers



Special Olympics Washington



Bellevue Special Needs PTA



NURTURING WATER THERAPIES

The CG SPORTS Co.



ORCA SWIM SCHOOL
Heating fear in warm water



BOYS & GIRLS CLUBS OF BELLEVUE



#swimsafegigharbor
For a Public Aquatic Facility in Our Maritime City



CHLORINE DECKWEAR

